

SAFE CAM™

brought to you by Union Connector

THE NEWEST IMPROVEMENT IN CAM CONNECTORS...

WHY DO YOU NEED SAFECAM™?

Cam outlets are large enough for the finger of a small child or unsuspecting crewmember. SafeCam™ eliminates this danger by preventing the outlets from being "hot" unless plugs are inserted into them. Exposed outlets will never be "hot".

HOW DOES IT WORK?

The SafeCam™ outlet panel contains patent-pending sensing technology that disconnects power to the Cam outlets unless plugs are inserted into ALL the outlets.

WHAT EQUIPMENT NEEDS SAFECAM™?

Company Switches, portable distros, outlet boxes, safety disconnects.

WHERE CAN SAFECAM™ BE USED?

Schools, Theatres, Convention Centers, Exposition Halls, Sound Stages, Ballrooms, Stadiums, Arenas, Museums, and anywhere else cam outlet panels are used.



SAFE • AFFORDABLE • PROTECTS YOU FROM POTENTIAL LIABILITY



40 Dale St. West Babylon, NY 11704
Ph: 631-753-9550 Fx: 631-753-9560
www.unionconnector.com
www.companyswitch.com

Product Bulletin No.: SCF-101B

SafeCam™

Features

- UL Listed
- Accepts industry standard Cam plugs
- Prevents contact with "Hot" cams
- Operates shunt-trip in associated breaker or switch
- Requires all cams to be plugged in before operating
- Available on Union Connector Company Switches
- Sequential connection not required
- Can be retrofitted to some existing Company Switches
- Available with single or dual Neutrals
- Single and three-phase versions available
- Perfect for schools, churches, museums and event centers



Options

- Special labeling
- Parallel sets of outlets
- Isolated Ground
- Re-settable disconnect using a key-operated switch
- Power disconnect when Ground continuity fails
- Audible alarm when disconnect occurs

Specifications

1. The system shall consist of an outlet panel with a quantity of SafeCam™ outlets. These outlets shall accept standard E1016 / Series 16 Cam plugs.
2. SafeCam™ outlets shall contain a means to monitor the insertion and/or removal of a plug into the outlet.
3. A circuit breaker or disconnect switch shall be controlled by the SafeCam™ system monitor. This shall disconnect power to the outlets whenever an outlet is exposed (plug removed).
4. Insertion of a plug into ALL the SafeCam™ outlets shall allow the breaker/disconnect to be reset and energize the outlets.
5. The system shall include "dummy" plugs (non-conducting) for use when a phase leg is not being used.
6. The system shall be able to monitor Ground continuity.
7. The system shall contain I/O ports for communication with other systems such as fire alarm, stage manager's controls, etc.
8. The system shall be UL Listed.
9. The system shall be the SafeCam™, as manufactured by Union Connector.

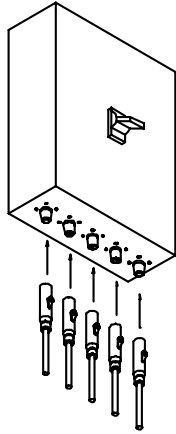


40 Dale St. West Babylon, NY 11704
Ph: 631-753-9550 Fx: 631-753-9560
www.unionconnector.com
www.companyswitch.com

Product Bulletin No.: SCF-101B

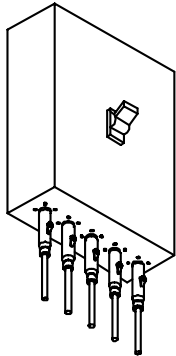
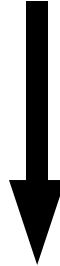
SafeCam™

How It Works - as simple as 1 - 2 - 3



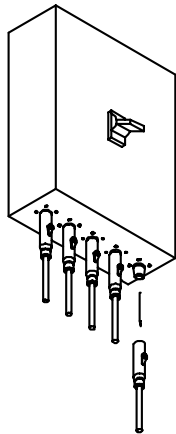
1. Plug the cables into a SafeCam™ panel.

No need to worry about proper sequence of connection. All the outlets are “cold” because the breaker is in the OFF position, SafeCam™ keeps the breaker in the OFF position until ALL the plugs are firmly seated in their outlets. If an outlet is exposed, SafeCam™ trips the breaker and keeps it in the OFF position.



2. Set the breaker to the ON position.

Once all the plugs have been inserted into the proper outlets, energize the system by pushing the breaker handle to the ON position. The outlets are energized, and the cables provide power to the equipment connected to them. As long as the plugs remain in the outlets, the SafeCam™ system will not trip the breaker.



3. Remove any plug when the show is over.

Removing any plug will cause the SafeCam™ system to trip the breaker into the OFF position. The remaining plugs can then be removed also, without fear of making a “hot” disconnect. The breaker is OFF and all outlets are “cold”.